



Company Presentation

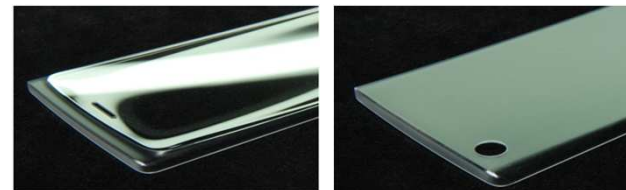
G-TECH Optoelectronics Corporation

- ❖ Company Name : ***Gt oc*** // G-Tech Optoelectronics Corp.
- ❖ Capital : 2 Billion NTD
- ❖ CEO : Tony Chung
- ❖ HQ : Miaoli, Taiwan

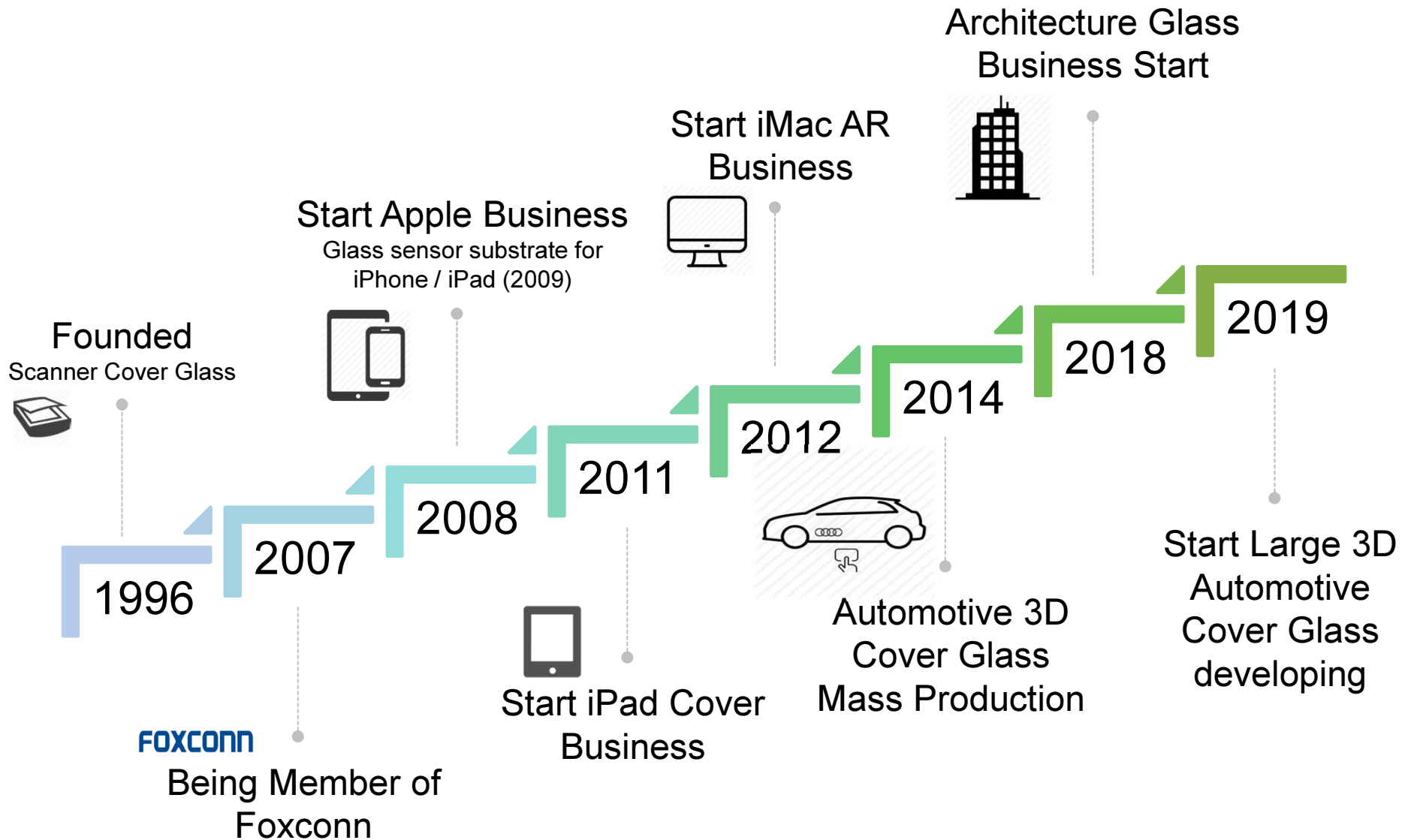


Product :

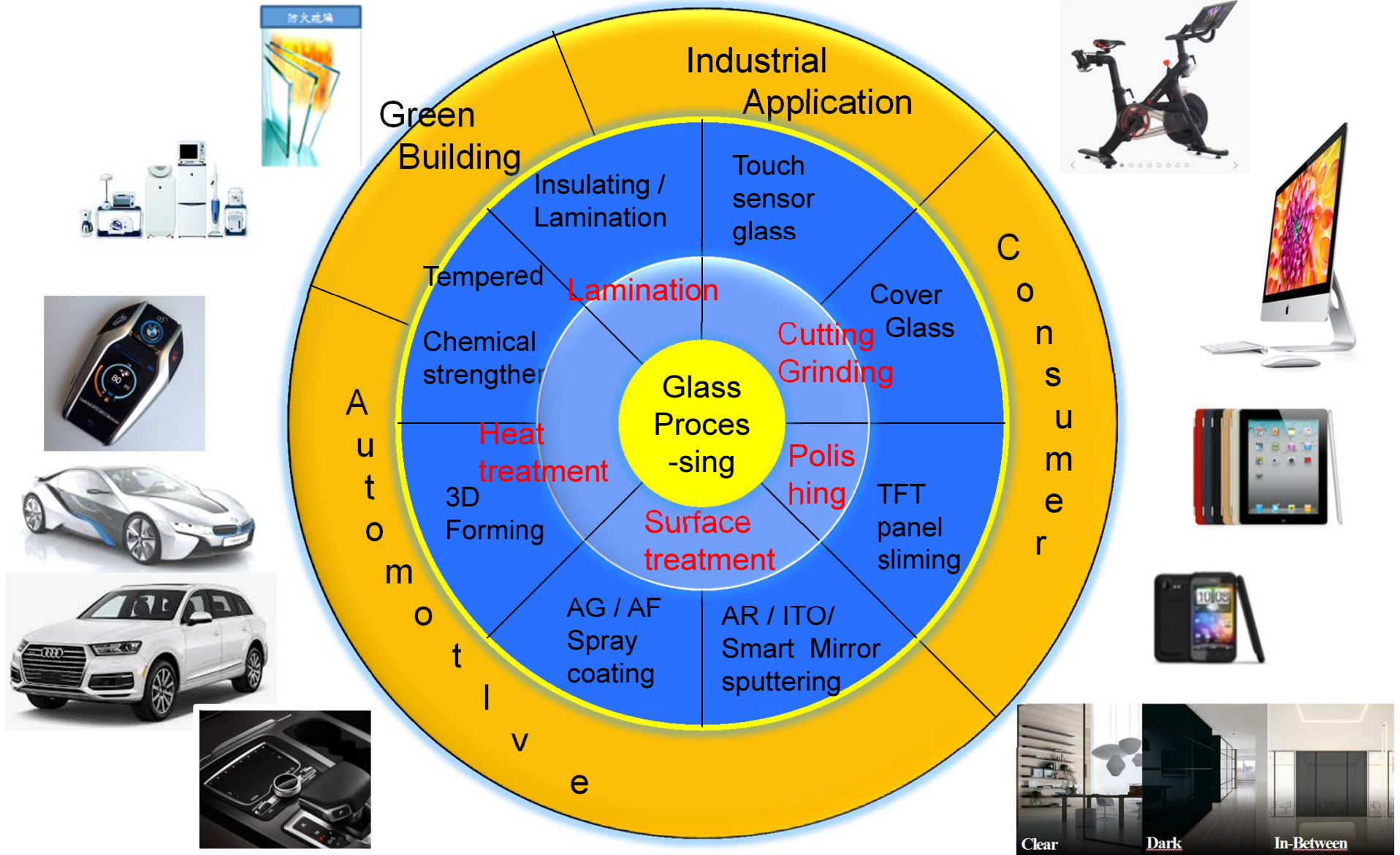
- 1) Chemical Strengthening
- 2) Glass Coating (*ITO / AR / AG / AF*)
- 3) Cover Glass (*TV / Monitor / Notebook / Tablet PC / Mobile Phone*)
- 4) 3D Glass Forming
- 5) Touch Module



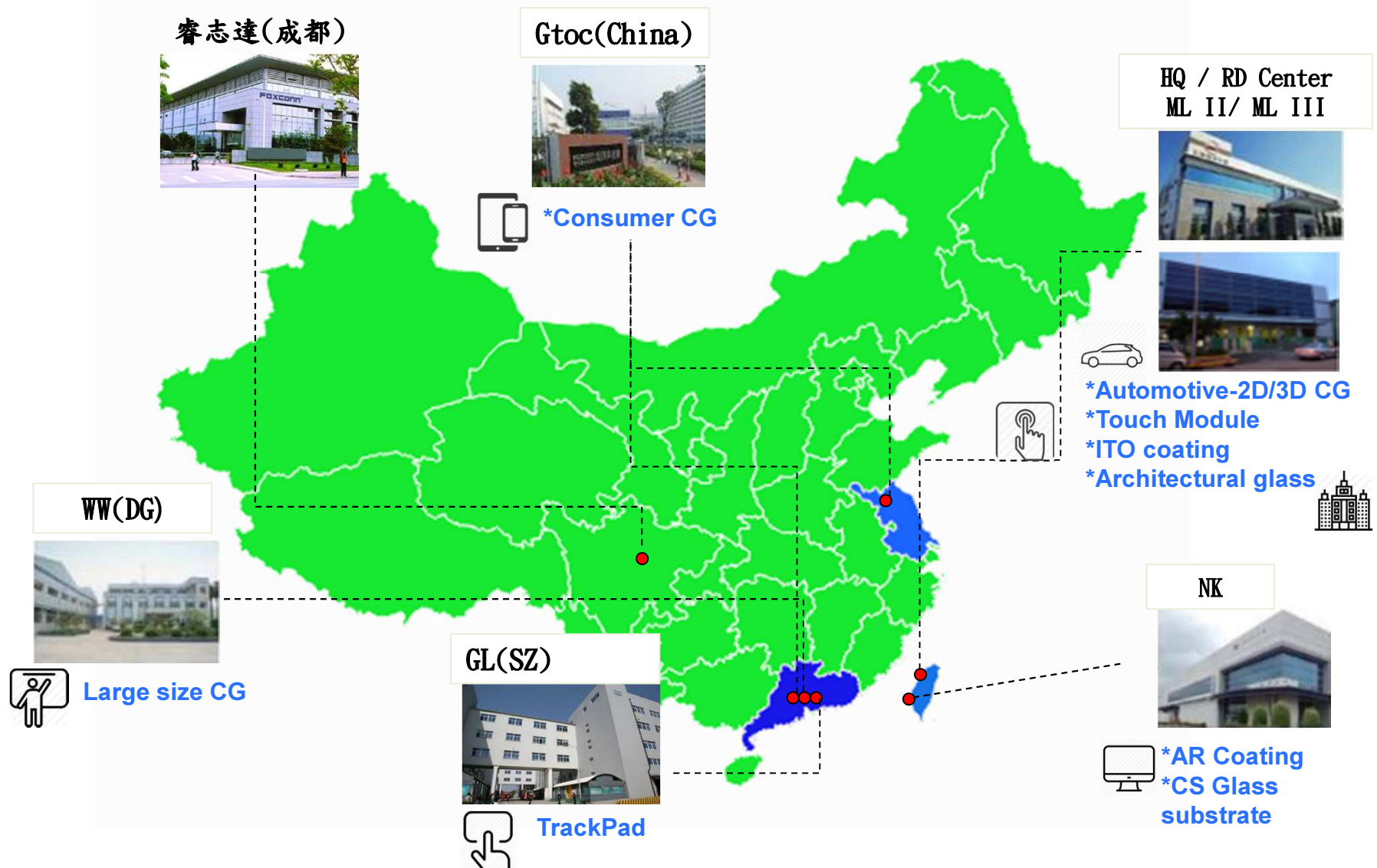
Company Milestone



Core Technology & Application



Global Location



Product- Cover Glass(For Consumer)



● Cover Glass (2D / 3D)

● 2D Max: 70"

● 3D Max: 17"

AR

For Consumer
Application



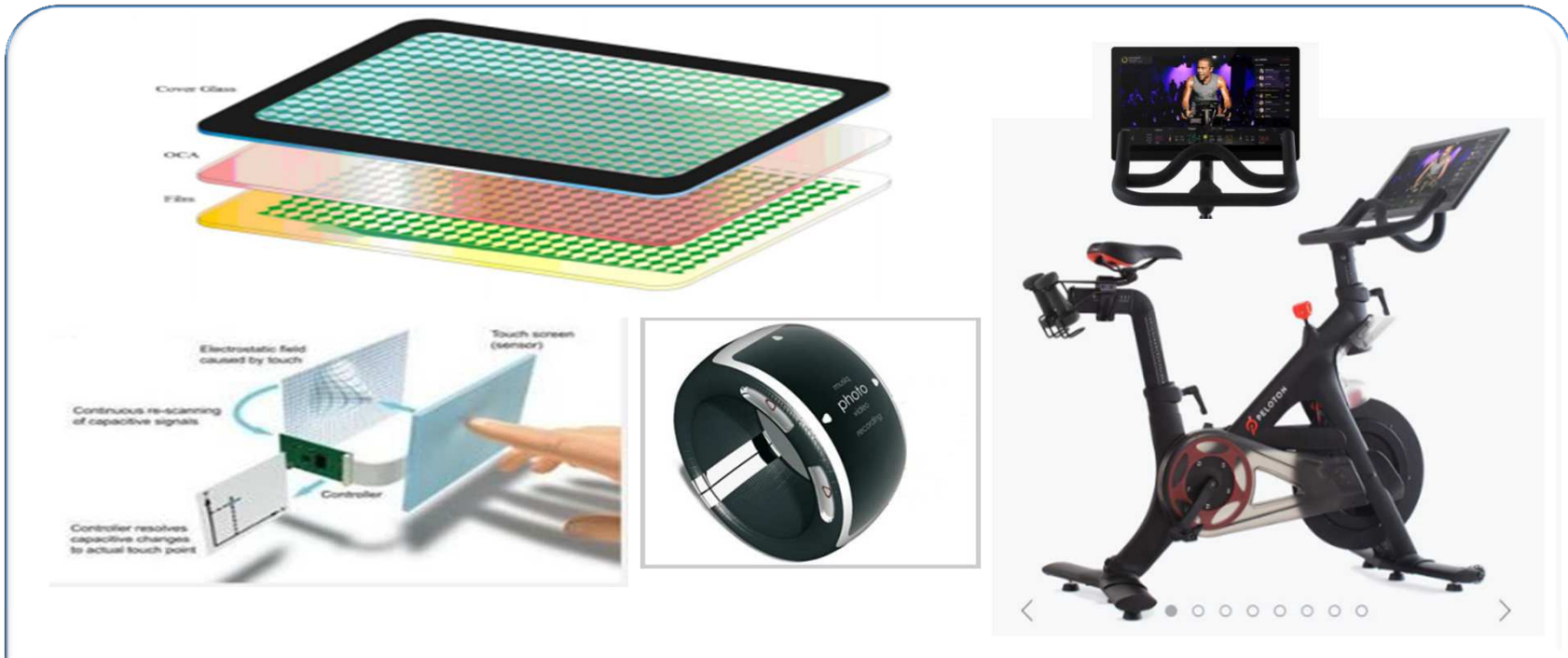
For Medical
Application



Smart Mirror

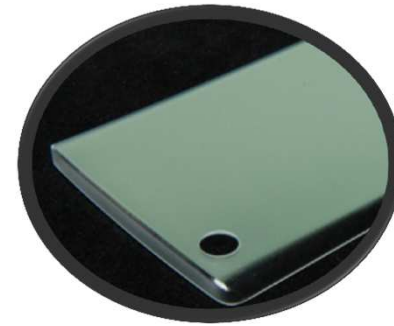
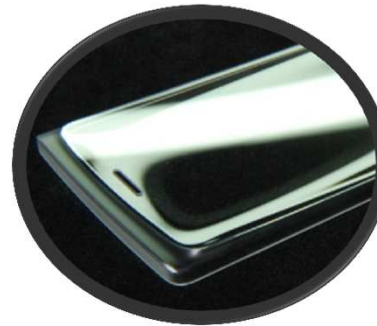
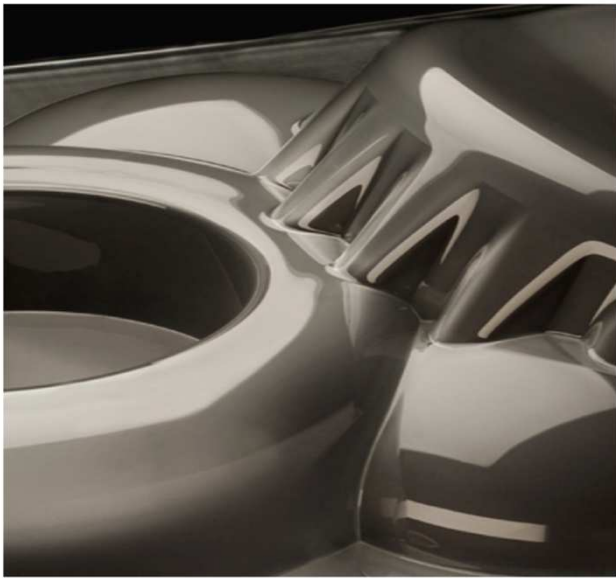
- ITO/IMITO : 1100X1300 / 3.5mX1.5m
- AR : Inline(4~6 layers W-band) ,Batch(custom design)
- Smart Mirror Coating
- AG(spray) : max 730x920mm

Products - Touch Module



🌟 G1F / GG Type
Capacitive type touch module

Products -Automotive Cover Glass



- 2D/2.5D CG for Automotive

- 3D Formed Glass (Max size ~720x270mm)

01

Cover Glass

2D / 2.5D / 3D Cover glass

02

AG Spray Coating

High temperature curing AG spray solution for durable application

03

AR Sputtering

Inline / batch type sputtering machine that suitable for 2D/2.5D/3D cover glass



04

Decoration

Screening Printing / Pad Printing / Spray Painting / Decoration Film

05

Chemical Strengthening

Suit able for thin glass

06

AF Spray Coating

WCA > 110

Significant Properties of Gtoc 3D

Flexible material Selection

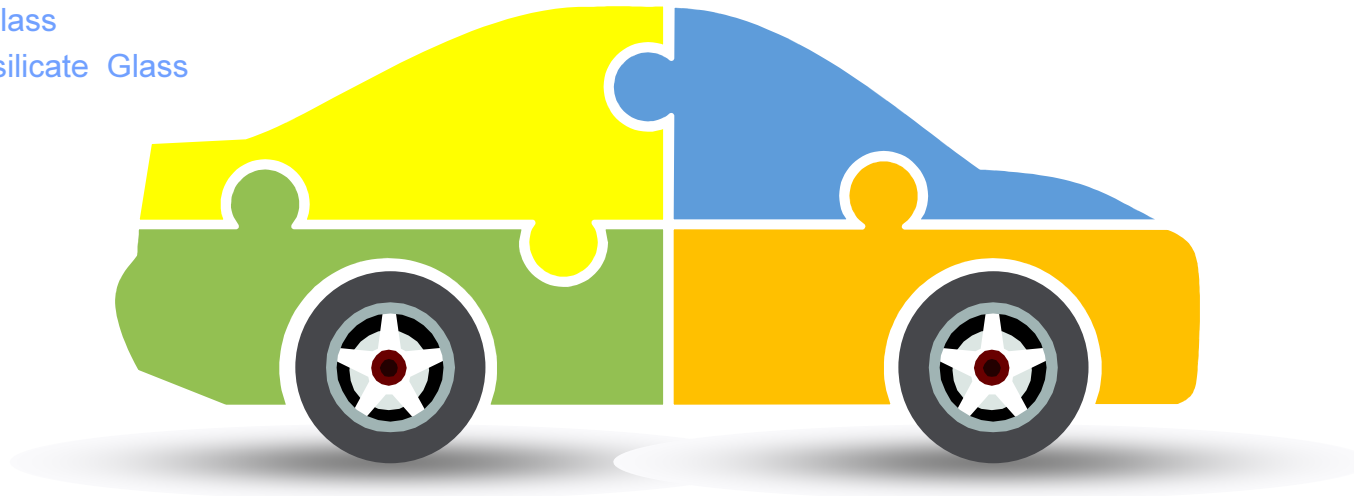
Most glasses with coefficient of thermal expansion (CTE) between 3.2 and $9.0 \mu\text{m}/\text{m}^*\text{K}$;

e.g.:

- Soda Lime Glass
- Aluminium - silicate Glass

Good dimension accuracy

- X,Y,Z direction : $\pm 0.15\text{mm}$
- Thickness : $\pm 3\%$



Wide range glass thickness selection

Thickness from 0.33mm ~ 40mm
could be processed

Variable shape available

- Steps / Recesses / Protuberances / Openings
- Flat surfaces / Curved surfaces
- Free forms and geometries can be integrated together

Quality System

ISO 9001
BUREAU VERITAS
Certification



0008



IATF 16949

ISO 14001
BUREAU VERITAS
Certification



0008

綠建築玻璃應用

(Environmental Friendly, Energy-Efficiency)

❖ 重要合作夥伴 Asahi Glass

超白玻璃 Clearvision: Low-iron neutral float glass



特性:

- * 可達到最佳的太陽熱能與光穿透度。
- * 超白玻璃的低鐵含量，使其本身呈現接近完全透明的最佳原色，採用超白玻璃可使展示物品在玻璃的防護下，仍能保持其極致自然的顏色樣貌。
- * 為漆板玻璃最佳的基板選擇，可使漆板塗料的色彩完美呈現。
- * 亦可應用於建築玻璃，如室內隔間、建築外觀、商店門面以及博物館的展示櫥窗。
- * 產業應用包括燈罩、太陽能電池覆板、家具、淋浴間等。

抗菌玻璃 AntiBacterial Glass

利用玻璃內的銀離子破壞細菌結構，
達到抗菌效果

可消除90%以上黴菌、99%以上有害細菌



適合使用地區
醫院、診所
餐廳、廚房
Spa、健身房
學校、托兒所中心
機場, 火車站, 捷運站



- 均勻玻璃表面
- 容易清潔
- 可使用清潔劑
- 防水
- 穩定
- 無吸收性
- 無毒
- 非可燃物
- 抗UV
- 耐撞擊(可使用安全鍍膜或夾層膠合)
- 持續性能(10年保固)

創新產品

Product milestones

2013

2014

2015



Low-E Glass



Easy Clean Glass



Smart Window



抗反射玻璃



Interior Glass



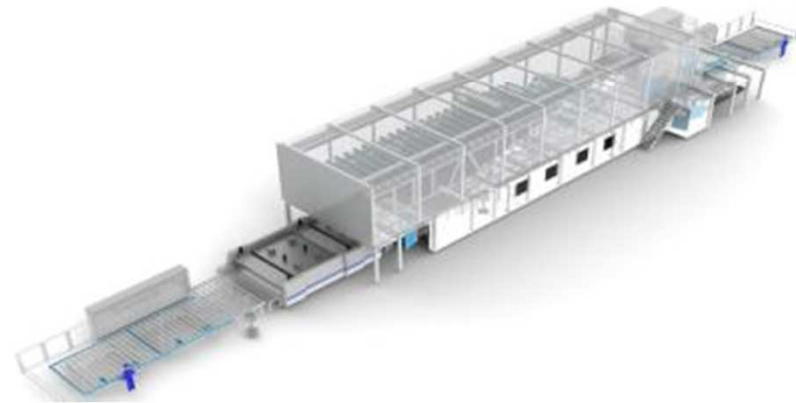
Smart Mirror



Anti-flame glass

中空覆層線 IGU Line

百超 Bystronic



高性能強化爐 Tempering Line

Glaston



精密膠合線 Lamination Line

百超 Bystronic

家用電器玻璃簡介

Household Electrical Appliances (HEA) Introduction

家電玻璃應用



家電玻璃應用：冰箱層板、冰箱面板、瓦斯爐面板、消毒櫃面板、空調面板、空氣淨化器面板、抽油煙機面板、水波爐面板、洗衣機面板等等

Balance sheet (2020年)

Concise Balance Sheet(4 quarters)				
The data is provided by G-TECH Optoelectronics Corporation Company (Listed company)				
Unit: NT\$ thousand				
	2020/03/31	2020/06/30	2020/09/30	2020/12/31
Total current assets	1,322,809	1,230,514	1,575,055	-
Total non-current assets	2,318,223	2,244,861	2,174,723	-
Total assets	3,641,032	3,475,375	3,749,778	-
Total current liabilities	1,381,836	1,344,731	1,303,867	-
Total non-current liabilities	806,779	866,914	1,168,377	-
Total liabilities	2,188,615	2,211,645	2,472,244	-
Total Share Capital	2,063,936	2,063,936	2,063,936	-
Total Equity, Security Token Offer	-	-	-	-
Total capital surplus	40,528	15,958	15,958	-
Total retained earnings	-814,617	-975,968	-963,838	-
Total other equity interest	162,570	159,804	161,478	-
Treasury shares	-	-	-	-
Total equity attributable to owners of parent	1,452,417	1,263,730	1,277,534	-
Equity attributable to former owner of business combination under common control	-	-	-	-
Non-controlling interests	-	-	-	-
Total equity	1,452,417	1,263,730	1,277,534	-
Number of share capital awaiting retirement	0	0	-	-
Equivalent issue shares of advance receipts for ordinary share	0	0	0	-
Number of shares in entity held by entity and by its subsidiaries	0	0	0	-
The Net Asset Value of Each Share	7.04	6.12	6.19	-

Income Statement (2020年)

	Unit: NT\$ thousand			
	2020/03/31	2020/06/30	2020/09/30	2020/12/31
Total operating revenue	401,571	1,087,187	1,818,529	-
Total operating costs	430,022	1,120,885	1,813,984	-
Gains (losses) on initial recognition of biological assets and agricultural produce	-	-	-	-
Gain (losses) arising from change in fair value less costs to sell of biological asset	-	-	-	-
Gross profit (loss) from operations	-28,451	-33,698	4,545	-
Unrealized profit (loss) from sales	-	-	-	-
Realized profit (loss) on from sales	-	-	-	-
Gross profit (loss) from operations	-28,451	-33,698	4,545	-
Total operating expenses	49,379	255,717	308,504	-
Net other income (expenses)	-	-	-	-
Net operating income (loss)	-77,830	-289,415	-303,959	-
Total non-operating income and expenses	14,453	40,117	66,791	-
Profit (loss) from continuing operations before tax	-63,377	-249,298	-237,168	-
Total tax expense (income)	0	0	0	-
Profit (loss) from continuing operations	-63,377	-249,298	-237,168	-
Total profit (loss) from discontinued operations	-	-	-	-
Profit (loss)	-63,377	-249,298	-237,168	-
Other comprehensive income, net	-1,687	-4,453	-2,779	-
Total comprehensive income	-65,064	-253,751	-239,947	-
Profit (loss), attributable to owners of parent	-63,377	-249,298	-237,168	-
Profit (loss), attributable to former owner of business combination under common control	-	-	-	-
Profit (loss), attributable to non-controlling interests	-	-	-	-
Comprehensive income, attributable to owners of parent	-65,064	-253,751	-239,947	-
Comprehensive income, attributable to former owner of business combination under common control	-	-	-	-
Comprehensive income, attributable to non-controlling interests	-	-	-	-
Total basic earnings per share	-0.31	-1.21	-1.15	-

www.gtoc.com.tw



The Global Leading
Total-solution Optoelectronics Glass Processing Service Provider
Confidential © G-TECH Co.,

Thank You

